

## Applicant's self-evaluation and progress evaluation forms for European Geoparks Network Global Geoparks Network



The information contained in this form will serve EGN evaluators in providing an overview on the application. It is divided into two main sections:

### **Part A) Description of the area**

- Administrative part (applicant's identity, signature, overview)
- Identification of the territory
  - I. Geology and Landscape
  - II. Management Structure
  - III. Information and Environmental Education
  - IV. Geotourism
  - V. Sustainable Regional Economy

### **Part B) Geoparks Progress Evaluation**

1. Relationship with the European/Global Geoparks Network
2. Management Structure and Financial Status
3. Geoconservation Strategy
4. Strategic Partnerships
5. Marketing and Promotion
6. Sustainable Economic Development



# European Geopark Network

## Applicant's Evaluation

### Applicants Identity

#### 1. Name of Applicant.

Molina and Alto Tajo Geopark Foundation

#### 2. Address of Applicant

Señorío de Molina-Alto Tajo Geopark Foundation C/ Arriba 1 Molina de Aragón 19300 Guadalajara (Spain)	
Region:	Castilla-La Mancha
Country:	España
Telephone:	(+34) 949 83 11 02
Fax:	
Email:	monaste1@hotmail.com

#### 3. Size of Territory (Km<sup>2</sup>)

4.186

#### 4. Contact Person

Director	Juan Manuel Monasterio
Geoscientist	Luis Carcavilla Urquí Spanish Geological Survey (IGME)
Specialist on Regional Development	Ángel Vela Laína

#### 5. Statement of acceptance of European Geopark Network Charter

**Requirements:** *We have read the charter and accept all of its provisions.*

Name	Position	Date
Juan Manuel Monasterio	President of Señorío de Molina-Alto Tajo Geopark Foundation	November 2010
Signature 		
Name	Position	Date
Ángel Vela Laína	Alto Tajo Natural Park Director	November 2010
Signature 		
Name	Position	Date
Luis Carcavilla Urquí	Spanish Geological Survey (IGME)	November 2010

Signature



Document A: Evaluation Document	Self – Assessment	Evaluator's Estimate
Total out of a possible 100 %	68.3%	
		Name:

## Application Overview

	Category	Weighting (%)	Self-assessment	Evaluators Estimate
<b>I</b>	Geology and Landscape		2.420	
<b>1.1</b>	Territory	5	830 (4.15%)	
<b>1.2</b>	Geoconservation	20	835 (16.7%)	
<b>1.3</b>	Natural and Cultural Heritage	10	755 (7.55%)	
<b>II.</b>	Management Structures	25	691 (17.27%)	
<b>III</b>	Interpretation and Environmental Education	15	587 (8.8%)	
<b>IV</b>	Geotourism	15	589 (8.83%)	
<b>V</b>	Sustainable Regional Economic Development	10	500 (5%)	
<b>Total</b>		100	4.587 (68.3%)	

## Notes For Applicants

- **Documentary evidence should be provided for all positive statements made in this application document.**
- **No new applicant is expected to score 100 %. However, a score of 50 % within each category is required**
- **Applications should be submitted to the following address two months in advance of an EGN Co-ordination meeting.**

**Cellule de Coordination des Europeans Geoparks**

**Réserve Géologique de Haute Provence**

**BP 156**

**04005 DIGNE LES BAINS Cedex FRANCE**

**Tel: 00 33 4 92 36 70 72**

**Fax:00 33 4 92 36 70 71**

**[contact@europeangeoparks.org](mailto:contact@europeangeoparks.org)**

I. Geology and Landscape		Marks available	Self Assessment
<b>1.1 TERRITORY</b>			
<b>1.1.1. Geosite list</b>			
List of "Geosites" located within territory (see annexe 1)			
20 "Geosites" or more			
40 "Geosites" or more		200	200
<b>Maximum Total</b>		<b>200</b>	<b>200</b>
<b>1.1.2. Geodiversity</b>			
How many geological periods are represented in your area? (5 points each, maximum 50 points). (see annexe 2)		50	45
How many clearly defined rock types are represented in your area? (10 points each, maximum 50 points). (see annexe 3)		50	50
How many distinct geological or geomorphological features are present within your area? (see annexe 4) (10 points each, maximum 100 points).		100	100
<b>Maximum Total</b>		<b>200</b>	<b>195</b>
<b>1.1.3. Public Interpretation of the Geopark's sites of interest</b>			
Number of sites with public Interpretation (trails, interpretation panels or leaflets) (see annexe 5)			
5-10			
10-20			
20 or more		140	140
Sites of Scientific Importance > 25 %		40	40
Sites used for Education > 25 %		40	40
Sites used for Geotourism > 25 %		40	40
Non-Geological Sites		40	40
<b>Maximum Total</b>		<b>300</b>	<b>300</b>
<b>1.1.5 Relationship to existing Geoparks</b> (select one from the following options)			
There is no comparison with any other existing Geopark		300	0
There is another Geopark with comparable geology or infrastructure on the same continent.		260	0
There is another Geopark with comparable geology or infrastructure in the same country		210	0
There is another Geopark with comparable geology or infrastructure in the same Region		150	0
There is another Geopark existing in the same geological unit, if yes: (Maestrazgo Geopark)			
Is its distance > 200 km			
Is its distance < 200 km		60	60
<b>Maximum Total</b>			<b>60</b>

Territory Subtotal	Maximum points	Self Assessment
	<b>1000</b>	<b>755</b>

<b>1.2. GEOLOGICAL CONSERVATION</b>	<b>Marks Available</b>	<b>Self Assessment</b>
<b>1.2.1. What type of Geosites can be found in your area (SELF AWARDED total cannot exceed 300).</b>		
At least one geosite of international significance (See annexe 6)	160	160
At least three geosites providing different kinds of geological or geomorphological features. (See annexe 6)	120	120
At least five geosites of national significance (See annexe 6)	120	100
At least 20 geosites of educational interest and used by schools and universities. (See annexe 6)	150	150
Do you have a geosites database? (See annexe 6)	90	40
Do you have a geosites map? (See annexe 7)	60	40
<b>Maximum Total</b>	<b>300</b>	<b>300</b>
<b>1.2.2. Strategy to protect against damage of geological sites and features (one answer only)</b>		
The entire territory has legal protection.		
Scientifically relevant part of an area is preserved as a protected area by law.	120	120
Prohibition of destroying and removing parts of the geological heritage.	150	100
At least 50 % of Applicants area is preserved as a protected area or by contract	90	90
<b>Maximum Total</b>	<b>300</b>	<b>300</b>
<b>1.2.3. How are the geosites protected against misuse and damage</b>		
General announcement of regulations against misuse and damage	40	30
Announcement of regulations against misuse and damage at individual sites	40	5
Use of observation posts, guarding and patrolling by wardens	60	60
Provision for enforcement of regulations (no digging and collection)	40	40
Offering collecting of geological specimens under supervision at selected sites		
<b>Maximum Total</b>	<b>180</b>	<b>135</b>
<b>1.2.5 What measures are carried out to protect geosites and infrastructure against damage and natural degradation?</b>		
Regular maintenance and cleaning	60	40
Conservation measures (See annexe 8)	100	40
Protective measures (preparation, sealing to avoid natural degradation)	100	20
<b>Maximum Total</b>	<b>160</b>	<b>120</b>

<b>Geoconservation Subtotal</b>	<b>Maximum points</b>	<b>Self Assessment</b>
	<b>1000</b>	<b>835</b>

1.3 Natural and Cultural Heritage		Marks Available	Self Assessment
<b>1.3.1 Natural Rank (SELF AWARDED total cannot exceed 300).</b>			
World Heritage Site or Man and Biosphere Reserve Area in part of the Geopark territory		300	-
Other International Designation in part of the Geopark territory <i>Natura 2000 Network (Sites of common importance). It covers the 60% of the geopark territory</i>		240	180
National designation in part of the Geopark territory		180	-
Regional designation in part of the Geopark territory: <i>Natural Park, Natural Monument, Microrreserves, all approved by law. They cover the 42% of the geopark territory</i>		120	100
Local designation in part of the Geopark territory		60	-
	<b>Maximum Total</b>	<b>300</b>	<b>280</b>
<b>1.3.2 Cultural Rank (SELF AWARDED total cannot exceed 300).</b>			
World Heritage Site in part of the Geopark territory <i>Two sites of Rock Art of the Mediterranean Basin on the Iberian Peninsula Word Heritage</i>		300	200
Other International Designation in part of the Geopark territory		240	-
National designation in part of the Geopark territory <i>(13 Cultural sites)</i>		180	180
Regional designation in part of the Geopark territory		120	
Local designation in part of the Geopark territory		60	-
	<b>Maximum Total</b>	<b>300</b>	<b>300</b>
<b>1.3.3 Promotion of Natural and Cultural Heritage</b>			
Interpretation <i>There are trails, panels, filed guides, signals and routes.</i>		100	100
Education programmes <i>There are several educational programmes</i>		100	50
Communication		100	-
Promotion to the general public <i>There are four Visitors Centers, 3 information huts, 1 tourism office, and two official websites</i>		100	100
	<b>Maximum Total</b>	<b>400</b>	<b>250</b>

Natural and Cultural Heritage Subtotal	Maximum points	Self Assessment
	<b>1000</b>	<b>830</b>

Total Points Awarded For Section I: Geology and Landscape	Maximum points	Self Assessment
	<b>3000</b>	<b>2.420</b>

II. MANAGEMENT STRUCTURE		Marks Available	Self Assessment
<b>2.1 How is the Applicants management structure organised?</b>			
A clearly defined border and area of responsibility See annexes 1		40	40

An effective organisation to enhance protection and sustainable development.	40	40
An independently administered budget <b>See annexe 9</b>	20	20
<b>Maximum Total</b>	<b>100</b>	<b>100</b>
<b>2.2 Does a management or Master Plan exist? (See annexe 10)</b>		
Management or Master Plan exists (not older than 10 years): there is not a Management Plan of the Geopark, but several partial management plans are developing in the area	40	10
Management or Master Plan is in preparation (to be completed within two years)	20	-
<b>Maximum Total</b>	<b>40</b>	<b>10</b>
<b>2.3 Master Plan Components (SELF AWARDED total cannot exceed 100)</b>		
If a plan exists, what components does it include? (See annexe 10)	20	
If no plan exists, which components have been separately worked out? (You should refer to five different components in accompanying documentation)	10	5
Strength and Weakness Analysis of Management and administration	20	0
An audit of the geological and other resources	20	0
Strength and Weaknesses Analysis referring to the following:		
Geology	5	5
Landscape protection	5	5
Tourism "geotourism"	5	2
Agriculture and forestry	5	5
Analysis of local/regional development potentials	10	5
Definition of development goals for important fields of interest (geology, geotourism etc)	10	0
Models for sustainable development	10	10
<b>Maximum Total</b>	<b>100</b>	<b>37</b>
<b>2.4 Does a 3 or 5 year action plan exist? (You should refer to the main components in accompanying documentation)</b>		
3 or 5 year action plan exists and is being implemented	40	0
3 or 5 plan is in preparation (to be completed within two years)	20	0
<b>Maximum Total</b>	<b>40</b>	<b>0</b>
<b>2.5 Does your Application have a Marketing Strategy (the SELF AWARDED total cannot exceed 100)</b>		
Strategy exists (not older than 10 years) (See information about LEADER PROGRAMME in annexe 11)	50	20
Strategy in preparation (will be finished within 2 years)	20	0
<b>2.5.1. If a strategy exists, which elements have been included?</b>		
Market research	10	0
Creation of products	10	0
Organisation of product distribution	10	0
Tourism marketing strategy	10	0
Communication strategy	10	0
<b>2.5.2. If no strategy exists, which elements have been separately worked out?</b>		
Market research	5	5
Creation of products	5	2
Organisation of product distribution	5	5
Tourism marketing strategy	5	5
Communication Strategy	5	2
<b>Maximum Total</b>	<b>100</b>	<b>39</b>

<b>2.6 Applicant should protect its geological heritage and create sustainable geotourism. What has been done to fulfil this duty?</b>		
Definition of areas which will be the focus of tourism development	25	25
Definition of areas where no tourism is allowed, (with focus on protection and research)	20	20
Measures taken to regulate and reduce traffic (restricted access, central parking lots, traffic guiding system, signposting etc.)	15	15
Environmental friendly hiking path system	10	10
Clearly defined cycle or other trails such as bridleways or river trails.	10	10
<b>Maximum Total</b>	<b>80</b>	<b>80</b>
<b>2.7 Are there any initiatives or working groups who discuss promotion of natural and cultural heritage</b>		
Regular "Working Group" meetings on specific topics	20	20
Individual cooperation and contracts between Applicant, tourist organisations and other interest groups	10	10
Other regular activities, not described by the answers above.	10	10
<b>Maximum Total</b>	<b>40</b>	<b>40</b>
<b>2.8 Has your Applicant area received any awards or other formal recognition for its activities in the fields of geodiversity, conservation or sustainable geo-tourism during the last five years? (SELF AWARDED total cannot exceed 100)</b>		
International awards: <b>Science on Stage (Iberoamerican edition) 2009 to the best book of popular science to Geological Field Guide of Alto Tajo Natural Park</b>	80	50
National awards (name and date of award)	40	0
<b>European charter for sustainable tourism: 2009</b>	50	50
European diploma of European council	50	0
Other (e.g. from industry) (name and date of award)	20	0
<b>Maximum Total</b>	<b>100</b>	<b>100</b>
<b>2.9 Are competent geological and scientific experts available to promote further research work on a scientific basis? (SELF AWARDED total cannot exceed 140)</b>		
At least one advisory expert who is a practicing geoscientist	10	0
Or		
At least one person with a degree in geosciences or other related discipline in the permanent staff	20	20
At least five people with a degree in geosciences or other related discipline on the staff of the Applicant	10	0
Do additional experts exist in the permanent staff (e.g. biologists)	10	10
Regular and formal joint activity with at least one scientific institution (University, National Geological Survey)	15	15
Regular consulting is maintained by:		
Persons with scientific background in geosciences	15	15
Persons with experience in geosciences	10	0
Amateurs	5	0
Do you have a Network of experts	10	10
How many different scientific disciplines are in the expert network		
< 5	5	0
Geologist, Paleontologist, Biologist, Archaeologist, Forest engineer, Historian	> 5	10
Does a marketing expert exist? If not who does the work?	5	0
Does a press office exist? If not who does the work?	5	0
Does a product manager exist? If not who does the work?	5	0
Are other staffs available to run field trips/guided walks?	5	0

Do you have administrative staff ?	5	0
Do you have museum staff	5	5
<b>Maximum Total</b>	<b>140</b>	<b>85</b>
<b>2.10 Does your Applicant area have the following Infrastructure</b>		
Museum within the area of Application managed by yourself or a partner in your organization	100	100
Information Centre within the area of Application	80	80
'Info-kiosks' or other 'local information points' within the area of Application which carry information about the Applicant and its aims and work	40	40
Information panels within the area	40	30
Geological Trails within the area of Applicant, which the Applicant has developed or been involved in developing	40	40
<b>Maximum Total</b>	<b>300</b>	<b>290</b>

<b>Total Points Awarded For Section II: Management Structure</b>	<b>Maximum points</b>	<b>Self Assessment</b>
	<b>1000</b>	<b>691</b>

<b>III. Information and Environmental Education</b>	<b>Marks available</b>	<b>Self Assessment</b>
<b>3.1 Research, information and education scientific activity within the territory</b>		
At least one scientific/academic institution working in the Applicant's area.	40	40
At least one student final report (mapping etc.) in the Applicant's area per year	20	10
At least one of PhD thesis on Applicant's area within the past three years	40	0
At least five scientific or tourism focused academic papers from the work within the Applicant's area during last 5 years	40	40
<b>Maximum Total</b>	<b>140</b>	<b>90</b>
<b>3.2 Do you operate programs of environmental education in your Applicant area?</b>		
Does your permanent staff include specialists in environmental education, who undertake such work as their main role within your team.	50	50
Do you operate at least one formal education programme (please outline the nature of the programme (s))	30	0
Do you contribute towards at least one formal education programme developed by other organisations. (museums etc.)	20	20
Personal and individual program offered to children visiting the Applicant's area	20	10
Do you operate a special program for primary/elementary school classes?	20	10
Do you operate a special program for secondary/high school classes?	20	0
Do you operate a special program for university students?	20	0
Are there any university camps/education centres in the Applicant's area	20	20
<b>Maximum Total</b>	<b>200</b>	<b>110</b>
<b>3.3. What kind of educational materials exist? (The SELF AWARDED total cannot exceed 120)</b>		
Have you developed new educational material for school classes?	20	0
Films, video, slideshow etc.	20	20
Interactive elements/ internet	20	10
Different special exhibitions changing on a regular basis	20	20
Special education equipment (puzzles, special constructions, etc)	20	10
Do you produce other material for children below 8 years?	20	10
<b>Maximum Total</b>	<b>120</b>	<b>70</b>
<b>3.4 What kind of published information is available in your Applicant area?</b>		
Protection of geological heritage	15	15
Geological history of the area	15	15
Environmentally friendly behaviour in the area	15	0
Other aspects of natural history which can be found within the area	15	15
Historical elements	10	10
<b>Maximum Total</b>	<b>70</b>	<b>55</b>
<b>3.5 What kind of professional marketing of the area takes place?</b>		
Printed material (e.g. leaflets, magazines)	25	25
Popular literature for public (e.g. books, guide books)	15	15
CD or video material	15	15
Other promotional material or merchandise	15	15
<b>Maximum Total</b>	<b>70</b>	<b>70</b>
<b>3.6 In how many languages is the marketing material produced? (The SELF AWARDED total cannot exceed 80)</b>		
English	10	0

French	10	0
Spanish	10	10
Russian	10	0
Chinese	10	0
Arabic	10	0
Add 10 points for each other language. <b>GIVE DETAILS (Languages)</b>		0
Multi-languages in one publication	10	0
<b>Maximum Total</b>	<b>80</b>	<b>10</b>
<b>3.7 Geology provision for school groups. For example, organized visits etc. (The SELF AWARDED total cannot exceed 90)</b>		
Guided tours by Applicant's staff or through a member organisation	30	20
Standard programs, regularly offered for all park visitors	10	10
Limited group size (max. 30 persons per guide)	10	10
Are alternatives available if tour impossible due to bad weather conditions?	10	5
Do programs exist for different ages?	20	0
Do special, scientific programs exist?	20	20
Is teacher training offered in matters relating to the Applicant?	20	10
<b>Maximum Total</b>	<b>90</b>	<b>75</b>
<b>3.8 Education – Guides</b>		
At least one advisory expert who is a practicing geoscientist	10	10
Do you have at least one expert providing guided visit that your organization has a role in developing?	20	10
Personal guides	10	10
Freelance guides whose training and / or program is supported by your organization	10	10
Training courses	10	10
<b>Maximum Total</b>	<b>60</b>	<b>50</b>
<b>3.9 What kind of information do you provide to educational groups, which encourage them to visit your area?</b>		
Letters to schools and universities	20	0
Applicant-brochure	20	20
Press announcements (Newspapers, Radio, TV)	20	0
Applicant newspaper or newsletter	20	0
<b>Maximum Total</b>	<b>80</b>	<b>20</b>
<b>3.10 Do you use the internet for school programmes? What kind of service do you provide?</b>		
Own website with general information about environmental education within the area	40	0
Those responsible for the education programme may be reached by E-Mail	20	0
Regular electronic newsletter	15	0
Up to date calendar of activities	15	15
<b>Maximum Total</b>	<b>90</b>	<b>15</b>

<b>Total Points Awarded For Section III: Education</b>	<b>Maximum points</b>	<b>Self Assessment</b>
	<b>1000</b>	<b>587</b>

<b>IV. Geotourism</b>	<b>Marks available</b>	<b>Self Assessment</b>
<b>4.1 Do information centres or exhibitions concerning the area exist in the Applicant's area? (SELF AWARDED total cannot exceed 100)</b>		
At least one information centre, managed by yourself or one of the partner members of your organization	30	30
No centre existing yet, but the Applicant is part of an exhibition in another facility (museums etc.)	10	-
Existing 'info points' or similar facilities throughout the area managed by yourself or one of the partner members of your organization	20	20
Information centre "meeting and starting" point for excursions	10	10
Is the Information centre accessible for wheelchair users and does it cater for individuals with other disabilities?	10	10
Personal and individual information offered to visitors about possible activities in the area.	10	10
Do you offer tourist information at the centre?	10	10
Is the information centre accessible by public transport?	10	5
Centre open to the public at least 6 days a week, all year round weather permitting	10	10
<b>Maximum Total</b>	<b>100</b>	<b>100</b>
<b>4.2. How is information and interpretation about the area presented in info centres, information points etc?</b>		
Static display material	10	10
Films, video, slideshow etc.	10	10
Interactive displays	10	10
Different special exhibitions changing on a regular basis	40	10
<b>Maximum Total</b>	<b>70</b>	<b>40</b>
<b>4.3 Public Access and facilities (SELF AWARDED total cannot exceed 150)</b>		
Is it possible to reach the Applicant area by public transport	80	50
Do you provide your own tourist transport	20	
Is public transport integrated with walking, cycling trails	20	5
Do you have car park facilities connected to the trails which you have developed	50	40
Are there toilets available in the parking areas	20	
<b>Maximum Total</b>	<b>150</b>	<b>90</b>
<b>4.4 Are visitors informed about public transport in the area and encouraged to use it before they come?</b>		
Promotional material about the area (leaflets, brochures, internet) contains information about public transport	20	0
Websites of the Applicant and/or local tourism organizations are linked to web-based timetables and transport information held by others.	20	20
Special offers for tourists using public transport, bicycle or other forms of sustainable transport	20	0
<b>Maximum Total</b>	<b>60</b>	<b>20</b>
<b>4.5 What kind of guided tours have been developed by your management body or your partners?</b>		
Groups with special interests in geology and geomorphology	10	10
Tours take place regularly during the season	10	10
Tours for a broad audience	20	20
Do you offer tours for disabled visitors	10	0
Guided tours by qualified staff	10	10
Limited group size (max. 30 persons per guide)	10	10
Alternatives available if tour impossible due to bad weather conditions	10	5
Flexible registration system (day to day basis) for participants or no registration necessary	10	10

	<b>Maximum Total</b>	<b>90</b>	<b>70</b>
<b>4.6 What else do you use to inform visitors about your area</b>			
Easy to read interpretation panels in entrance areas or at Tourist locations		50	50
There is at least one promoted trail dealing with geological subjects, developed by your team, alongside any developed by partners.		40	40
Information panels along trails are regularly checked and cleaned		10	2
	<b>Maximum Total</b>	<b>100</b>	<b>95</b>
<b>4.7 How are information or activities of different organisations co-ordinated</b>			
Joint information or promotional material		20	5
	<b>Maximum Total</b>	<b>20</b>	<b>5</b>
<b>4.8 Do you use the internet and what kind of service do you provide?</b>			
Own website with general information about the area		40	20
Links to other websites of tourist board, communities, local government, which provide a broad range of information on the Applicants area.		10	10
Geopark management may be reached by email		5	5
Regular electronic newsletter		10	0
Facility to order publications on-line		10	0
Up to date calendar of activities		15	10
Guidance for visitors on potential excursions		10	10
	<b>Maximum Total</b>	<b>100</b>	<b>45</b>
<b>4.9 What kind of infrastructure is available for activities such as horse riding, canoeing and cycling ?</b>			
Network of footpaths which include the main touristic and scientific points of interest		10	2
Uniform/standard signposting of paths		10	2
Regular checks of infrastructure and immediate repair guaranteed		10	0
Special maps and information sheets for hikers, cyclists, etc.		10	0
At least one path concerning a special subject (mining, archaeology, architecture not previously counted in your score under another heading		10	5
Guided cycling, walking, etc. tours, provided or actively supported by a member organization		10	0
Such tours include several days all inclusive offer (hotel, half or full board) for hiking and cycling tours provided or actively supported by a member organization		10	0
Such tours include several days all inclusive package with luggage transport provided or actively supported by a member organization		10	0
There is a network of hiking/biking friendly hotels/pensions, defined by a catalogue of criteria who work in partnership with your organisation.		20	0
	<b>Maximum Total</b>	<b>100</b>	<b>9</b>
<b>4.10 How do you communicate the goals of Geotourism, especially with those responsible for tourism.</b>			
Direct personal meetings or through their involvement in your organization.		10	10
A regular award scheme to promote good practice.		20	
The selection and nomination of official partners/mentors/sponsors		20	20
	<b>Maximum Total</b>	<b>50</b>	<b>30</b>
<b>4.11 Do you have the following sustainable (e.g. non car based) trails?</b>			
Geo-trails		20	20
Cultural trails		10	5
Forest trails		10	10
Other trails		10	
Other out-door activities not mentioned elsewhere.		10	
	<b>Maximum Total</b>	<b>60</b>	<b>35</b>

<b>4.12 Visitor evaluation</b>		
Do you count visitors?	25	25
By entrance tickets / trail counters		
By field trip participants?		
By estimation?		
By visitor survey?		
Do you evaluate where your visitors come from?	25	
By booking addresses?		
By market analysis?		
By university study?		
Do you use visitor evaluation for your forward planning?	25	10
Do you have analysis of the socio-economic profile of your visitors (families, school classes, pension groups, tourist groups, etc)?	10	
Questionnaire on visitors' satisfaction levels?	15	15
<b>Maximum Total</b>	<b>100</b>	<b>50</b>

<b>Total Points Awarded For Section IV: Geotourism</b>	<b>Maximum points</b>	<b>Self Assessment</b>
	<b>1000</b>	<b>589</b>

<b>V. Sustainable Regional Economy</b>	<b>Marks available</b>	<b>Self Assessment</b>
<b>5.1 What efforts are undertaken to promote regional food and craft products, integrating the catering trade?</b>		
Initiatives promoting food from regional and/or ecological production, which your organisation develops or actively supports.	50	20
Meals from regional and/or ecological production are available in restaurants	30	20
The Applicant organizes markets, where mainly regional agricultural products are sold	50	0
A label for regional food products or local gastronomy exists	30	0
Direct marketing of regional agricultural products is promoted	40	20
<b>Maximum Total</b>	<b>200</b>	<b>60</b>
<b>5.2. Which efforts are undertaken to create and promote regional geotourism products? (The SELF-AWARDED total cannot exceed 100)</b>		
Initiatives promoting geological replicas production exist	50	0
Casts and souvenirs from local production are available	100	20
The organization or its active partners has a retail outlet or outlets where mainly regional products are sold.	50	50
<b>Maximum Total</b>	<b>200</b>	<b>70</b>
<b>5.3. How are regional crafts promoted?</b>		
The marketing of local craft products is actively supported	50	30
Local craft products are showcased	100	40
<b>Maximum Total</b>	<b>150</b>	<b>70</b>
<b>5.4 What efforts are undertaken to promote links between the Applicant and local businesses? (SELF AWARDED total cannot exceed 100)</b>		
A label for regional services/products has been developed the Applicant or in partnership with others	50	0
Direct marketing of regional products is undertaken by your organization	50	0
Tourism offers include tours of collaboration with local businesses	20	20
<b>Maximum Total</b>	<b>100</b>	<b>20</b>
<b>5.6 What kind of contracts are regularly offered to businesses in your area?</b>		
Services (repair, management)	50	20
Design, Print	50	40
Other equipment and services to support geotourism and interpretation, e.g. transport, display cabinets etc. (transport, guided visits)	80	30
<b>Maximum Total</b>	<b>150</b>	<b>90</b>
<b>5.7 Networking (SELF AWARDED total cannot exceed 200)</b>		
A network of co-operating enterprises exists, fostered by the Applicant.	100	75
There is a formal contract between the Applicant and its partners	100	100
There are joint projects, financed, between the Applicant, private businesses and local authorities.	50	40
<b>Maximum Total</b>	<b>200</b>	<b>190</b>

<b>Total Points Awarded For Section V: Sustainable Regional Economy</b>	<b>Maximum points</b>	<b>Self Assessment</b>
	<b>1000</b>	<b>500</b>



**ANNEXES  
(ACCOMPANYING  
DOCUMENTATION)**



## Annexe 1. List and description of the places of geological interest (Geosites)

Nº	NAME	MAIN INTEREST	MAIN USE	DEGREE OF PROTECTION	DIVULGATION FACILITY
G1	Río Tajuña cliffs	Geomorfology	Turistic-Didactic	NIL	NIL
G2	Tufa limestone	Geomorfology	Turistic-Didactic	NIL	NIL
G3	Paleozoic-Mesozoic Discordance at Los Milagros Valley	Stratigraphy	Educational	Natural Park	YES Itinerary+panel
G4	Los Milagros valley anr rock towers	Geomorphology	Turistic-Didactic	Natural Park	YES Itinerary+panel
G5	Los Casares Cave	Paleontologic	Turistic Scientific	Natural Park	YES Itinerary+panel Guided visits
G6	Saelices de la Sal salt Works	Stratigraphy Cultural	Turistic-Didactic	Natural Park	YES Itinerary+panel
G7	Tajo canyon	Geomorphology	Turistic-Didactic	Natural Park	YES Itinerary+panel
G8	Los Cuchillares	Geomorphology	Turistic-Didactic	Natural Park	YES Itinerary+plate
G9	Hundido de Armallones	Tectonics Geomorphologic	Turistic-Didactic	Natural Park	YES Itinerary+panel
G10	Las Cárquimas waterfall	Geomorphology	Educational	Natural Park	NIL
G11	la Inesperada salt works	Stratigraphy Cultural	Educational	Natural Park	NIL
G12	Aragonitos and jacintos de Cobeta´s Outcrop	Mineralógico	Turistic-Didactic Educational	Natural Park	YES Itinerary+plate
G13	Geological resources	Cultural	Turistic-Didactic	Natural Park	YES Itinerary+panel+plate
G14	Arandilla river canyon	Geomorphology	Turistic-Didactic	Natural Park	YES Itinerary+panel+plate
G15	Arandilla hanging valley	Geomorphology	Scientific	Natural Park	YES Itinerary+plate
G16	Alcorón cave	Geomorphology	Turistic-Didactic	Natural Park	YES Itinerary+panel+plate
G17	Claro limestone pavement	Geomorphology	Scientific	Natural Park	NIL
G18	Hoya del Espino limestone pavement	Geomorphology	Turistic-Didactic	Natural Park	YES Itinerary+panel+plate
G19	Utrillas Sandstone old pit	Stratigraphy	Scientific	Natural Park	YES Itinerary+panel+plate
G20	Poveda thrust fault	Tectonics	Scientific	Natural Park	NIL
G21	Arroyo de la Hozn faults and folds	Tectonics	Scientific	Natural Park	NIL
G22	Tajo old meander	Geomorphology	Turistic-Didactic	Natural Park	YES Itinerary+panel+plate
G23	Taravilla lagoon	Geomorphology Sedimentológico	Scientific Turistic-Didactic	Natural Park	YES Itinerary+panel+plate
G24	Poveda waterfall	Geomorphology	Turistic-Didactic	Natural Park	YES Itinerary +plate
G25	TajoCanyon (Herrería Bridge- Hundido de Armallones section)	Geomorphology	Turistic-Didactic	Natural Park	NIL
G26	Horcajo Cliff	Geomorphology	Turistic-Didactic	Natural Park	NIL
G27	Chequilla surroundings	Geomorphology	Turistic-Didactic	Natural Park	YES Itinerary +plate
G28	Chequilla monolith	Geomorphology	Turistic-Didactic	Natural Park	YES Itinerary+panel+plate
G29	Graptolite bed of Checa	Paleontologic	Scientific Turistic-Didactic	Natural Park	YES Itinerary+panel+plate
G30	Checa´s <i>Drapstone</i>	Stratigraphy	Scientific Turistic-Didactic	Natural Park	YES Itinerary+panel+plate
G31	La Aguaspeña tufa waterfall	Geomorphology	Turistic-Didactic	Natural Park	YES Itinerary+panel
G32	El Cubillo polje	Geomorphology	Turistic-Didactic	Natural Park	YES Itinerary+panel
G33	Tornero cave	Geomorphology	Turistic-Didactic	Natural Park	NIL
G34	Variscian folds in Checa and Orea	Tectonics	Scientific Educational	Natural Park	YES Itinerary+panel
G35	Siluran section in Checa and Orea	Stratigraphy	Scientific Educational	Natural Park	NIL
G36	Vulcanic site of Alcoroches	Volcanic	Scientific	Natural Park	NIL
G37	Blocks stream of Sierra de Orea	Geomorphology	Turistic-Didactic	Natural Park	YES Itinerary+panel

G38	Vulcanic site of Orea	Volcanic	Turistic-Didactic	Natural Park	YES Itinerary+panel+plate
G39	La Salobreja lagoon	Geomorphology	Turistic-Didactic	Natural Park	YES Itinerary+plate
G40	Peat bogs	Geomorphology	Turistic-Didactic Educational	Natural Park	Itinerary+panel
G41	Karstic Spring	Geomorphology	Educational	Natural Park	YES Itinerary+plate
G42	La Escaleruela tufa waterfall	Geomorphology	Turistic-Didactic	Natural Park	YES Itinerary+panel+plate
G43	El Campillo tufa building	Geomorphology	Educational	Natural Park	NO
G44	San Pedro's bridge tufa building	Geomorphology	Turistic-Didactic	Natural Park	NO
G45	la Fm. Barahona paleontologic site	Paleontologic	Turistic-Didactic	Natural Park	YES Itinerary+panel
G46	Folds in Cuevas Labradas limestones Formation	Tectonics	Turistic-Didactic	Natural Park	YES Itinerary+panel+plate
G47	Fm. Cuevas Labradas Stratotype	Stratigraphy	Educational Scientific	Natural Park	YES Itinerary+panel
G48	Muschelkalk facies with salt pseudomorphs	Stratigraphy	Educational Scientific	Natural Park	YES Itinerary+panel
G49	Permo-Triassic section in Barranco de la Hoz (Barranco de la Hoz Canyon)	Stratigraphy Geomorphology	Educational Scientific	Natural Park	YES Itinerary+panel+plate
G50	Aragonite type-locality	Mineralógico	Scientific Educational	NIL	NIL
G51	River Mesa gorge (I)	Geomorphology	Turistic-Didactic	In process LIC+ZEPa	NIL
G52	River Mesa gorge (II)	Geomorphology	Turistic-Didactic	In process LIC+ZEPa	NIL
G53	Mesa (isolated hill)	Geomorphology	Turistic-Didactic	NIL	NIL
G54	Sierra de Aragoncillo petrified forest	Stratigraphy Paleontology	Scientific	NIL	NIL
G55	Permian-Triassic section at Rillo de Gallo	Stratigraphy	Scientific	NIL	NIL
G56	Fuentelsaz stratotype (GSSP)	Stratigraphy Paleontol	Scientific	NIL	NIL
G57	Caldereros hills	Geomorphology Stratigraphy	Turistic-Didactic Scientific	Natural Monument	YES Brochure
G58	Mines of Setiles	Mineralógico-Minero	Scientific	NIL	NIL
G59	Museum of Molina de Aragón	Paleontology Cultural	Turistic-Didactic Scientific	SI	YES Several panels and brochures
G60	Estrella Mine (Copper)	Mineralógico-Minero	Scientific	NIL	NIL
G61	Poveda de la Sierra and Peñalén mines	-Ambiental Geomorphology	Scientific Educational	NIL	NIL
G62	Armallá salt Works	Stratigraphy Cultural	Turistic-Didactic	NIL	NIL
G63	Alustante limestone pavement	Geomorphology	Scientific	LIC+ZEPa	NIL
G64	Peñas Rubias	Geomorphology	Turistic-Didactic	Natural Park	YES Itinerary+ plate

#### Annexe 2:

Ordovician, Silurian, Permian, Triassic, Jurassic, Cretaceous, Paleogene, Neogene, Quaternary.

#### Annexe 3:

Limestones, dolomites, marls, sands, sandstones, tuff, conglomerates, quartzites, shales, clays.

#### Annexe 4:

Fluviokarstic canyons, cliffs, rock streams, caves, sinkholes, poljes, springs, tuffs, waterfalls, lakes, taffoni, rock towers, peat pools.

Annexe 5:

NAME	MAIN INTEREST	MAIN USE	DIVULGATION FACILITY
Paleozoic-Mesozoic Discordance at Los Milagros Valley	Stratigraphy	Educational	YES Itinerary+panel
Los Milagros valley anr rock towers	Geomorphology	Turistic-Didactic	YES Itinerary+panel
Los Casares Cave	Paleontologic	Turistic Scientific	YES Itinerary+panel Guided visits
Saelices de la Sal salt Works	Stratigraphy Cultural	Turistic-Didactic	YES Itinerary+panel
Tajo canyon	Geomorphology	Turistic-Didactic	YES Itinerary+panel
Los Cuchillares	Geomorphology	Turistic-Didactic	YES Itinerary+plate
Hundido de Armallones	Tectonics Geomorphologic	Turistic-Didactic	YES Itinerary+panel
Aragonites and jacintos de Cobeta's Outcrop	Mineralógico	Turistic-Didactic Educational	YES Itinerary+plate
Geological resources	Cultural	Turistic-Didactic	YES Itinerary+panel+plate
Arandilla river canyon	Geomorphology	Turistic-Didactic	YES Itinerary+panel+plate
Arandilla hanging valley	Geomorphology	Scientific	YES Itinerary+plate
Alcorón cave	Geomorphology	Turistic-Didactic	YES Itinerary+panel+plate
Claro limestone pavement	Geomorphology	Scientific	NIL
Hoya del Espino limestone pavement	Geomorphology	Turistic-Didactic	YES Itinerary+panel+plate
Utrillas Sandstone old pit	Stratigraphy	Scientific	YES Itinerary+panel+plate
Tajo old meander	Geomorphology	Turistic-Didactic	YES Itinerary+panel+plate
Taravilla lagoon	Geomorphology Sedimentológico	Scientific Turistic-Didactic	YES Itinerary+panel+plate
Poveda waterfall	Geomorphology	Turistic-Didactic	YES Itinerary +plate
Chequilla surroundings	Geomorphology	Turistic-Didactic	YES Itinerary +plate
Chequilla monolith	Geomorphology	Turistic-Didactic	YES Itinerary+panel+plate
Grapholite bed of Checa	Paleontologic	Scientific Turistic-Didactic	YES Itinerary+panel+plate
Checa's <i>Dropstone</i>	Stratigraphy	Scientific Turistic-Didactic	YES Itinerary+panel+plate
La Aguaspeña tufa waterfall	Geomorphology	Turistic-Didactic	YES Itinerary+panel
El Cubillo polje	Geomorphology	Turistic-Didactic	YES Itinerary+panel
Variscian folds in Checa and Orea	Tectonics	Scientific Educational	YES Itinerary+panel
Blocks stream of Sierra de Orea	Geomorphology	Turistic-Didactic	YES Itinerary+panel
Vulcanic site of Orea	Volcanic	Turistic-Didactic	YES Itinerary+panel+plate
La Salobreja lagoon	Geomorphology	Turistic-Didactic	YES Itinerary+plate
Peat bogs	Geomorphology	Turistic-Didactic Educational	Itinerary+panel
Karstic Spring	Geomorphology	Educational	YES Itinerary+plate
La Escaleruela tufa waterfall	Geomorphology	Turistic-Didactic	YES Itinerary+panel+plate
la Fm. Barahona paleontologic site	Paleontologic	Turistic-Didactic	YES Itinerary+panel
Folds in Cuevas Labradas limestones Formation	Tectonics	Turistic-Didactic	YES Itinerary+panel+plate
Fm. Cuevas Labradas Stratotype	Stratigraphy	Educational Scientific	YES Itinerary+panel
Muschelkalk facies with salt pseudomorphs	Stratigraphy	Educational Scientific	YES Itinerary+panel
Permo-Triassic section in Barranco de la Hoz (Barranco de la Hoz Canyon)	Stratigraphy Geomorphology	Educational Scientific	YES Itinerary+panel+plate
Caldereros hills	Geomorphology	Turistic-Didactic	YES

	Stratigraphy	Scientific	Brochure
Museum of Molina de Aragón	Paleontology Cultural	Turistic-Didactic Scientific	YES Several panels and brochures
Peñas Rubias	Geomorphology	Turistic-Didactic	YES Itinerary+ plate

### Annexe 6:

Geosites of international significance:

GSSSP Toarcian Aalenian of Fuenetsaz
Aragonite type-locality
Lower Silurian section and graptolite palaeontological site in Checa
Upper Permian and Lower Triassic section in Barranco de la Hoz

At least three geosites providing different kinds of geological or geomorphological features:

Stratigraphy	Stratigraphic sections	Checa's <i>Dropstone</i> la Fm. Barahona paleontologic site Fm. Cuevas Labradas Stratotype Muschelkalk facies with salt pseudomorphs Permo-Triassic section in Barranco de la Hoz (Barranco de la Hoz Canyon) Siluran section in Checa and Orea Permian-Triassic section at Rillo de Gallo		
	Stratigraphic discordance	Paleozoic-Mesozoic Discordance at Los Milagros Valley Los Milagros valley and rock towers		
Tectonics	Faults, folds and thrust	Poveda thrust fault Arroyo de la Hozn faults and folds Variscian folds in Checa and Orea Folds in Cuevas Labradas limestones Formation		
Mineralogicaly	Mineralogical interest sites	Aragonitos and jacintos de Cobeta's Outcrop Aragonite type-locality		
Palaeontology	Palaeontological sites	Graptolite bed of Checa Sierra de Aragoncillo petrified forest		
Geomorphology	Cliffs	Rio Tajuna cliffs Horcajo Cliff River Mesa gorge (I) River Mesa gorge (II) Los Cuchillares		
		Caves	Los Casares Cave Alcorón cave El Tomero Cave	
			Canyons	Tajo canyon Hundido de Armallones Arandilla river canyon TajoCanyon (Herreria Bridge- Hundido de Armallones section)
		Waterfalls, springs and tufa waterfalls		Las Cárquimas waterfall El Campillo tufa building San Pedro's bridge tufa building La Escaleruela tufa waterfall La Aguaspeña tufa waterfall Poveda waterfall
	Castle-like karst			Claro limestone pavement Hoya del Espino limestone pavement Alustante limestone pavement
			Rock towers and monolites	Chequilla surroundings Chequilla monolith Peñas Rubias
				Laggons
	Poljes		El Cubillo polje	
	Volcanic features	Volcanic site of Alcoroches Volcanic site of Orea		
	Periglacial landforms	Blocks stream of Sierra de Orea		
	Lithological landscapes	Caldereros' hills		

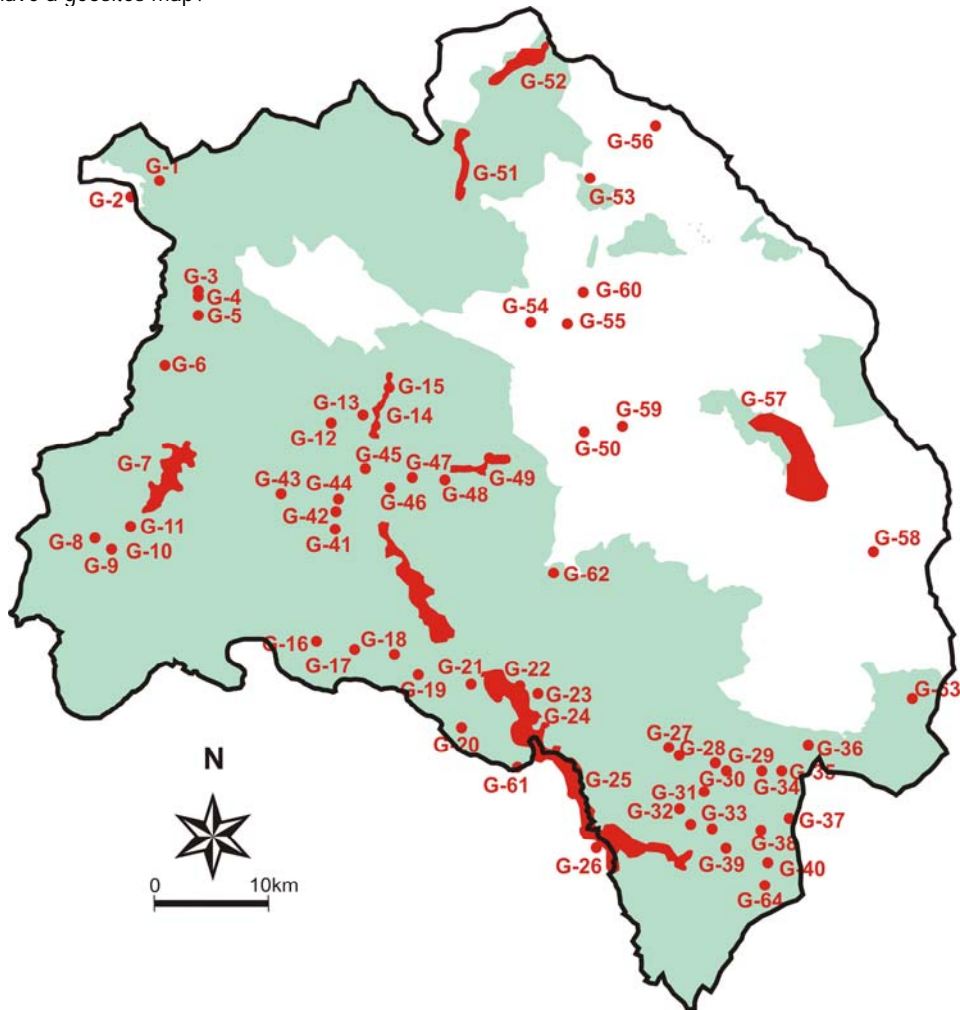
At least five geosites of national significance:

Los Milagros valley and rock towers
Los Casares Cave
Tajo canyon
Arandilla river canyon
Claro limestone pavement
Poveda thrust fault
Taravilla lagoon
Chequilla surroundings
Graptolite bed of Checa
Checa's <i>Dropstone</i>
Variscian folds in Checa and Orea
Siluran section in Checa and Orea
Vulcanic site of Alcoroches
Blocks stream of Sierra de Orea
Vulcanic site of Orea
San Pedro's bridge tufa building
la Fm. Barahona paleontologic site
Folds in Cuevas Labradas limestones Formation
Fm. Cuevas Labradas Stratotype
Permo-Triassic section in Barranco de la Hoz (Barranco de la Hoz Canyon)
Aragonite type-locality
Sierra de Aragoncillo petrified forest

At least 20 geosites of educational interest and used by schools and universities (see annex 5)

**Annexe 7:**

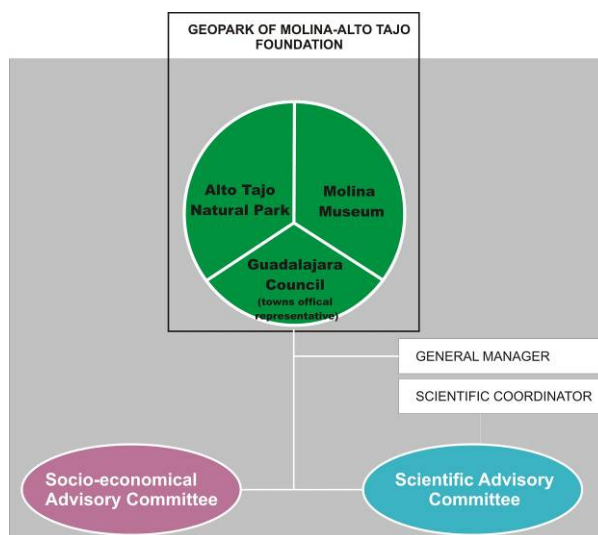
Do you have a geosites map?



**Annexe 8:**

- Protection of threatening sites
- Correction of modified rivers
- Recovery of fossils and lab's cares

**Annexe 9:** Map of defined border and area of responsibility



*Government structure of the Geopark.*

BOARD OF GOVERNORS		
ENTITY	DUTY	NAME
Geopark of Molina-Alto Tajo foundation	President	To be determined
Natural Park	Manager of the Natural Park	Ángel Vela Laina
Museum of Molina de Aragón-Asociación de Amigos del Museo	Representative of the Association	Juan Manuel Monasterio
Towns	Diputación de Guadalajara	To be determined

SOCIO-ECONOMICAL COMMITTEE. Coordinator: Inmaculada Martínez Parrilla		
Leader	General Manager of the Programme Leader Plus	Inmaculada Martínez Parrilla
Alto Tajo Natural Park Active Tourism Companies Association	Representative	José Carlos de Santiago
Rural Tourism Association in the Comarca of Molina de Aragón	President of the Association	Marta Corella
Research Centre of Molina de Aragón	Representative	Javier Aragoncillo
La Común (Local Government)	Mayor of Molina de Aragón	David Pascual
Management Board of the Natural Park	President of the Management Board	Laureano Martínez Pinilla

SCIENTIFIC COMMITTEE. Scientific Coordinator: Luis Carcavilla (IGME)		
ENTITY	NAME	TRAINING-SPECIALITY
Spanish National Research Council (CSIC)	Juan Carlos Gutiérrez-Marco	Geologist
Geo-mining Museum-Spanish Geological Survey (Madrid)	Isabel Rábano	Paleontologist
Complutense University of Madrid	Alfonso Sopena	Geologist
Complutense University of Madrid	Antonio Goy	Geologist
Polytechnic University of Catalonia	Josep María Mata Perelló	Geologist
Complutense University of Madrid	José Francisco Martín Duque	Geologist
Complutense University of Madrid	Álvaro García Quintana	Geologist
Spanish Geological Survey (IGME)	Enrique Díaz Martínez	Geologist
National Institute for Aerospace Technology (INTA)	Raúl Gorgues	Geologist
Royal Botanic Garden	Luis Mariano Ferrero	Biologist

Madrid Autonomous Community	Leopoldo Medina	Biologist
Research Institute of Molina de Aragón	Jesús Arenas	Archaeologist
Complutense University of Madrid	María Luisa Cerdeño	Archaeologist
Ayuntamiento de Madrid	Rafael Ruiz	Forest engineer
Spanish Geological Survey (IGME)	Alfonso Arribas	Paleontologist
Distance Education University of Madrid (UDIMA)	Plácido Ballesteros	Historian
Alcalá de Henares University	Ignacio Martínez Mendizábal	Paleontologist
Human Evolution UCM-ISCIII Reserach Center	Juan Luis Arsuaga	Paleontologist
Pyrenean Institute of Ecology (IPE)	Ana Moreno	Geologist
Alcalá de Henares University	Amelia Calonge	Geologist
Spanish Geological Survey (IGME)	Ramón Rodríguez	Geologist

## Annexe 10:

### Territory management: zonification

This official application would mean creating a Geopark that would encompass the whole comarca of the Señorío de Molina, identifying three kinds of territories:

-**Areas with Geoconservation as a priority:** it would comprise the Alto Tajo Natural Park, the Natural Monument of Caldereros´ range and all of the places of Common interest (belonging to Natura web 2000) within the comarca. Within these sectors the current management would not be altered nor modified by the current rules on preservation and usage, as they are territories which are already protected with specific management measures. That accounts for 60% of the Geopark´s territory.

-**Area of socioeconomic management:** This accounts for the rest of the territory of the shire. The generic geoconservation programmes would not be applied within this area, but touristic and economic development programmes would be carried out. That accounts for 36,4% of the Geopark´s territory.

-**Areas of potential value for geoconservation:** a range of small enclaves (usually less than 10 ha) within which there are geological value elements currently out of protection. There will be a short-term goal to establish geoconservation measures to prevent the potential degradation of the aforementioned elements, with the collaboration of the councils. Currently there is an inventory with more than 200 places of Geosites, some of which would become part of this group. There are currently 5 places to become part of the first list, with the short-term goal of ensuring its preservation, promoting scientific investigation and public usage. Furthermore, the Geopark would furnish these towns with orientation to approach these geoconservationist activities and other protection initiatives of the natural and cultural heritage. This accounts for 0,5% Geopark´s territory for the first 5 sites proposed.

## Annexe 11:

The Axis 4 LEADER plan is truly significative being managed by Molina de Aragón-Alto Tajo´s rural development association as a result of an agreement with the "Consejería de Medio Ambiente de Castilla la Mancha". This entity is made up of a profitless local action group which promotes a comprehensive development of the shire by allocating these grants properly. The Geopark´s territory exactly coincides with the area under LEADER programme in the Comarca of Molina in the Alto Tajo.

The central administration of the state passed by Royal Decree 752/2010 4<sup>th</sup> of July, the practical implantation of the law 45/2007 13<sup>th</sup> of December which deals with sustainable development in rural areas. In order to start it Castilla-La Mancha has been divided into 29 zone plans, which will be the tools for planning the measures and actions to be carried out along with Rural Development groups. 13 rural zones have been deemed as top priority as they require prompt boosting action. The "Comarca de Molina de Aragón-Alto Tajo" is one of these and it coincides 100% with the Geopark´s territory. The Geopark´s Territory is thus one of these 13 priority zones to be boosted by rural development grants. The Geopark can allot these funds towards Geotourism promotion as a potential tool in terms of local development.

The rural development grants coming from the Autonomous Government of Castilla la Mancha materialize themselves through different programmes. The most remarkable of these programmes is that of FORCOL (Regional funds for local cooperation) aimed at both rural development and its economical dinamization. During 2010-2012 54 millions of euros will be invested to ease up investment on productive economy and thrift in councils. Besides, to

carry out the aforementioned rural development plan both Castilla-La Mancha and central's government, through the Department of Environment (in Spanish Medio Ambiente y Rural y Marino Department) intend to devote almost 226 millions of euros, co-financed at 50 per cent basis during 2011-2015. The state will add up 2.8 millions of euros to this amount for general interest rural infrastructures.

The development strategy approach is shaped by the implantation of "Agenda local 21" in Molina de Aragón and its comarca. Agenda Local 21 constitutes an ever improvement process which sources from the local development opportunities, it encourages the citizen participation and aims to achieve social justice and equity in the Town. It is an integral management tool based on sustainable development, which caters for all the local needs without mortgaging other areas' development capabilities and/or future generations. It also envisages improving the organization of the Towns and providing the citizens with services through a working schedule which involves and benefits everyone. This Plan is complemented by belonging to the Web of Sustainable Cities and Villages in Castilla la Mancha which constitutes an agreement and coordination tool when implantating the Agenda Local 21 criteria.